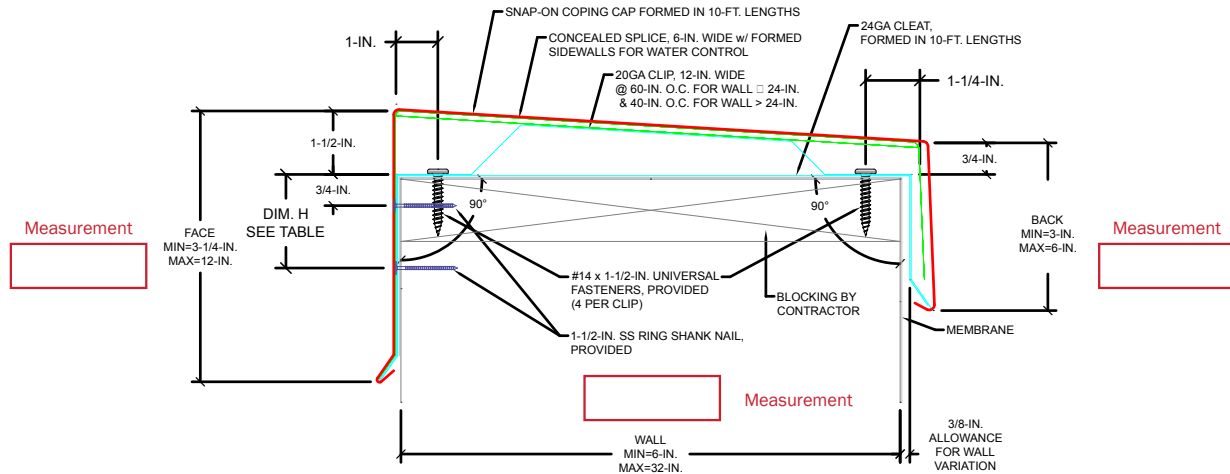


Continuous Cleat Intermittent Clip with a Continuous Cleat

ORDER SPECIFICATION FORM

ANSI/SPRI/FM4435/ES-1 TEST PRESSURES UP TO 159 PSF(VERTICAL) , AND 91 PSF (HORIZONTAL)



FOR MASONRY APPLICATIONS, PLEASE CONTACT HICKMAN.

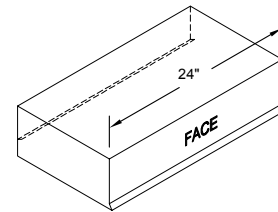
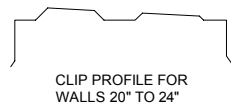
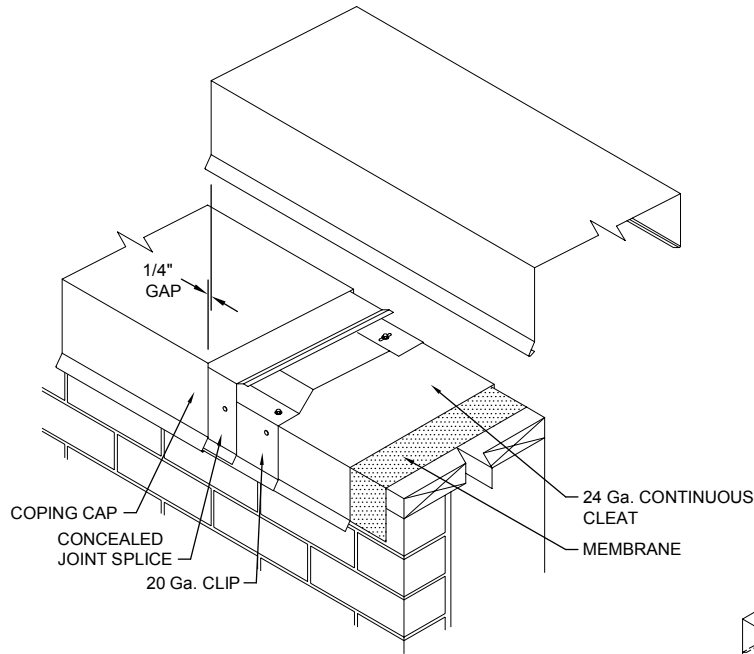
CONTACT HICKMAN FOR APPROPRIATE RECOMMENDATIONS NEEDED TO MEET/EXCEED ANSI/SPRI/FM4435/ES-1 DESIGN CRITERIA

FACE SIZE	DIM. H
FACE < 4-3/4-IN.	3/4-IN.
4-3/4-IN. < FACE < 7-1/2-IN.	2-1/4-IN.
7-1/2-IN. < FACE < 9-IN.	3-3/4-IN.
9-IN. < FACE < 10-1/2-IN.	5-1/4-IN.
10-1/2-IN. < FACE < 12-IN.	6-3/4-IN.

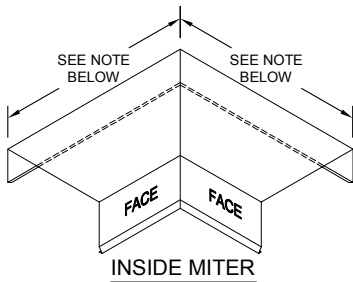
APPROVALS	COVER MATERIAL	THICKNESS	COVER FINISH
<div style="border: 1px solid black; padding: 2px; width: fit-content;">ANSI/SPRI/FM 4435 /ES-1 TESTED</div>	Aluminum Galvanized Steel Stainless Steel	24Ga. 22Ga. .040 in. .050 in. .063 in. .080 in.	Mill Prefinished Kynar Premium Prefinished Kynar Post Finished Kynar Prefinished Anodized Post Finished Anodized
QUANTITY Attach Sketches of Z- and T- Miters _____ Straight Length _____ Total Miters (Inside: _____ / Outside: _____) _____ Total End Caps (Left: _____ / Right: _____) _____ Total End Terms (Left: _____ / Right: _____) _____ Transition Miters _____ T-Miter _____ Z-Miter _____ Radius _____ Radius to Straight Miter _____ Radius End Cap _____ Vault Welded _____ Vault to Straight Miter Welded _____ Vault End Cap _____ Ridge Miter _____ Valley Miter	ACCESSORY TYPE Welded Metal-Lok	CUSTOMER APPROVAL Approved for Fabrication Approved with Changes Not Approved _____ Authorized Customer Signature Title _____ Date _____	
COLOR _____	Project Location: _____ Customer: _____ Representative: _____		

Continuous Cleat Intermittent Clip with a Continuous Cleat

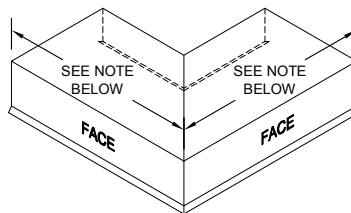
ORDER SPECIFICATION FORM



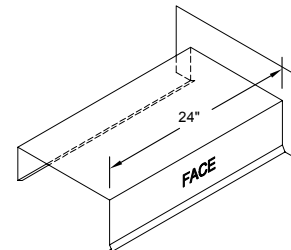
END CAP
LEFT HAND SHOWN



INSIDE MITER



OUTSIDE MITER



END TERM
RIGHT HAND SHOWN

Standard coping miter leg lengths:
 23-1/4" for 7-1/2" to 16" wall widths
 29-1/4" 16" to 23" wall widths
 custom lengths for wall widths > 23"
 Standard coping miter angle is 90°
 For special miter requirements, attach sketches or consult manufacturer for assistance.